

The **E16** interior is a compact, easy to install, surface-mounted interior LED dome light that is both attractive and affordable. Available with or without a switch, plus three different color temperatures to choose from. It's compact size and modern styling allows this light to easily conform to your needs, and it's backed with our lifetime warranty.

See [www.TecNiqInc.com](http://www.TecNiqInc.com) for more details and a complete list of part numbers.

## E16

### HIGH OUTPUT DOME LIGHT

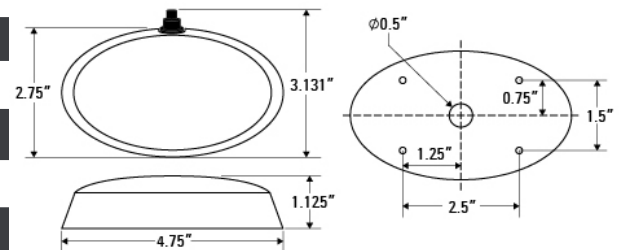


#### Technical features

- ✦ Lamp features six high efficiency LEDs, providing
- ✦ Sleek and stylish surface mount design
- ✦ Available with or without integrated ON/OFF switch
- ✦ White or black base available

#### Specifications

<b>Dimensions:</b>	4.75" x 2.75" x 1.125"
<b>LEDs:</b>	6
<b>Voltage:</b>	9 - 14V DC
<b>Current:</b>	0.18A-0.23A
<b>Connector:</b>	9"
<b>Mounting:</b>	Surface mount using (4) #6 screws hidden by the lens
<b>LED colors:</b>	White, Warm White, and Cool White
<b>Lumens:</b>	300



#### California Proposition 65

WARNING: This product can expose you to chemicals including lead, which is known to the State of California to cause cancer, birth defects or other reproductive harm

Part Numbers	Description	Std	Connector
E16-LW00-1	E16 Interior SM Neutral White Oval Light White Base	20	Sheathed Pigtail
E16-MB00-1	E16 Interior SM Warm White Oval Light Black Base	20	Sheathed Pigtail
E16-MW00-1	E16 Interior SM Warm White Oval Light White Base	20	Sheathed Pigtail
E16-WB00-1	E16 Interior SM Cool White Oval Light Black Base	20	Sheathed Pigtail
E16-WBS0-1	E16 Interior SM Cool White Oval Light Black Base w/Switch	20	Sheathed Pigtail

