

TecNiq Inc.
sales@tecniqinc.com
269-629-4440

TecNiqInc.com

TecNiq manufactures the highest quality, most technologically advanced LED lighting solutions in the industry. We believe that brighter, longer lasting LED products help keep our customers safe, and we stand behind every light we make with a Lifetime Warranty.



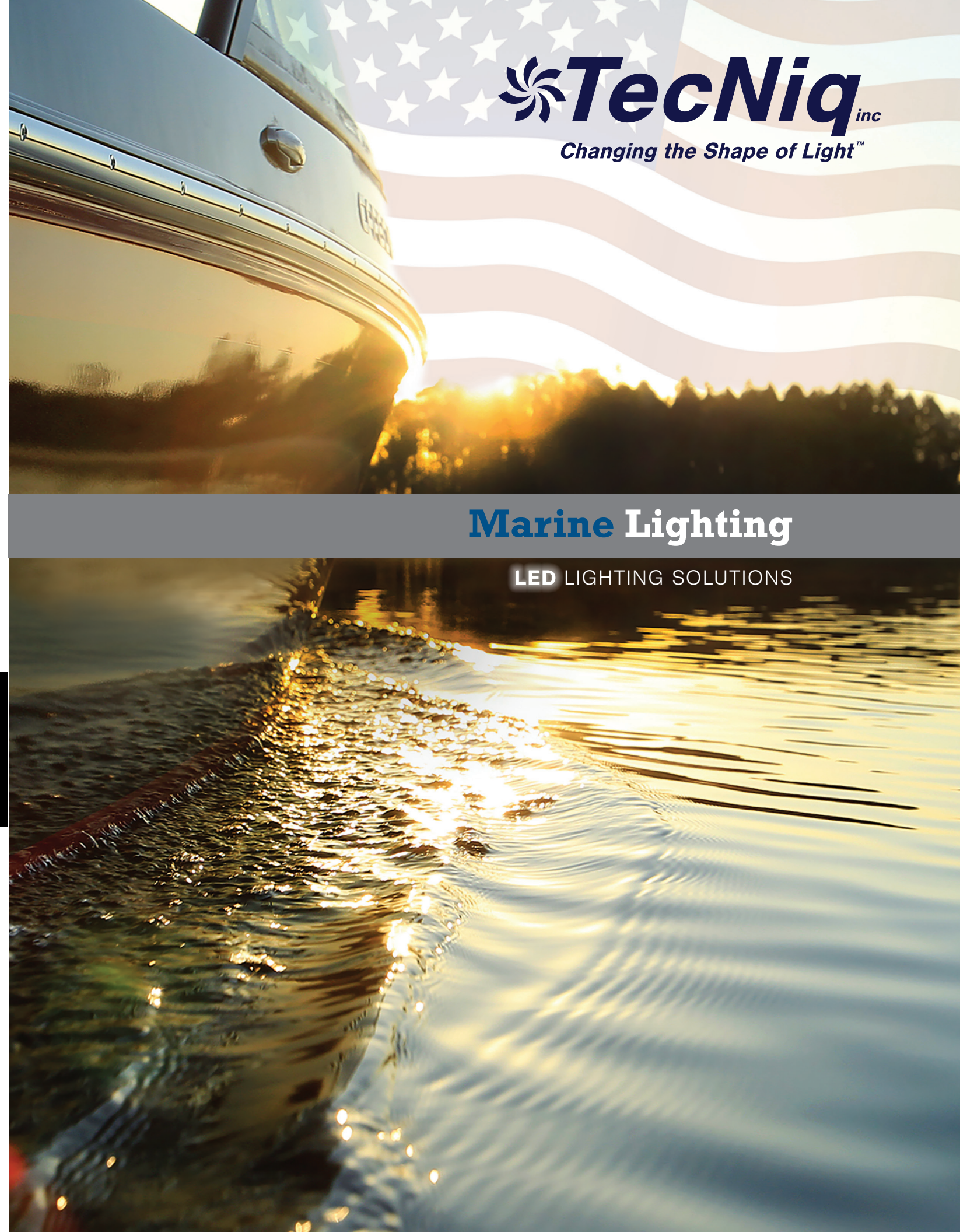
TecNiq lights are produced with **TecSeal**, our proprietary polyurethane potting material. TecSeal is developed to last longer and can withstand more extreme weather than competitors lights.



TecNiq is your premier **OEM Supplier** for LED lighting solutions. We take pride each and every day in our commitment to supporting the manufacturers that rely on us for their lighting needs. With technical support, account, and delivery information readily available, it's easy to see why so many companies are choosing TecNiq.



TecNiq is proud to offer a **No Haggle, Limited Lifetime Warranty** on all of our LED products. Take the worry out of your OEM experiences, and have piece of mind that TecNiq lights will light up time and time again, or we will replace them.



Marine Lighting

LED LIGHTING SOLUTIONS



Quality & Dependability as A Trusted Partner

Whether Off-the-Shelf products, or custom marine solutions - **TecNiq Lighting Solutions are the Quality & Dependability your marine business or personal watercraft deserve.**

TecNiq begins with a simple belief that we can offer our customers the greatest value, the highest quality LED lights and custom solutions, with the best customer care in the industry. TecNiq solutions are designed to maximize the output of light - delivering brighter and safer boating experiences, that help maximize the fun. Our products incorporate the highest quality materials, combined with advanced engineering to bring a lifetime of usage. All of this to assure our customers are getting the best LED products on the market.



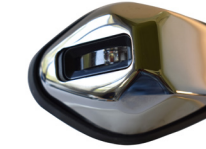
TecNiq Inc. is headquartered in Galesburg, MI and proudly **Designs, Engineers and Assembles** products in the **USA**.

M20: Marine Navigation Light



- Reinforced, sleek design providing a lifetime of navigation lighting
 - Meets or exceeds IP68 rating
- TecSeal Potting – Guaranteed sealed light
- Reliable 100,000 hour life performance

M21: Side Mount Navigation Light



- Designed with a 316 Stainless Steel cover
 - Impact resistant lens helps longevity
 - Active overheat protection
- Reliable performance for over 100,000 hours

M510/M511/M512: Docking, Navigation & Courtesy Light



- Stainless Steel body for protection against salt & fresh water conditions
 - Meets ABYC A-16 and USCG 2NM
- Surface mount design is easy to install, with no large holes to seal

M30: Pontoon Docking Lights



- Surface mount design provides safety & visibility
 - Stainless steel design prevents corrosion
 - (3) and (6) LED versions available
 - Provided with a 12" Pigtail connector

M10: All-Round Navigation Light



- Great looking light, designed to provide years of safe boating
 - Meets ABYC A-16 and USCG 2NM
- Twist-lock base provides easy installation and hidden fasteners

M50: Water Dragon Underwater Light



- The brightest surface mount underwater lights available
- Available in White, Blue, Green and RGB
 - 3 LED Model provides 1500 Lumens
 - 6 LED Model provides 2700 Lumens
 - 12 LED Model provides 5500 Lumens

E61: Surface Mount Docking Light



- Surface mount design is perfect for pontoons and fishing boats
 - 1400 Lumen output per light
- Excellent forward to side of boat illumination
 - 316 Stainless steel cover

E60: Flush Mount Docking Light



- Great appearance with powerful performance, providing 2000 Lumens each
 - Anodized cast aluminum heatsink
- Waterproof design - with form fitting gasket to protect the boat finish

M03: Projector Lamp



- Deliver your brand with Logo Lens applications• Completely waterproof and meets IP68 standards
- Available with White, or RGB color changing LED

E44: Flexible Lighting Strips



- Available in 4.5" increments up to 16.5'
- Produces 150 Lumens per 4.5" section (white)
- Easily installed with 3M adhesive tape back
- 3/16" strips surface mounts easily in tight spaces
 - Water Resistant

M91: RGB+W Accent Light



- Completely waterproof light, perfect for illuminating steps, or walk ways
 - Easy installation with push fit grommet
- Soft glow presents an even, well diffused look

D17: Accent Light - ALL NEW FRONT FACING



- Lamp features (6) high efficiency LEDs, providing **540** Lumens of output
 - Stylish surface mount design
- IP68 Rated - Guaranteed dust and water proof
- Perfect for fishing boats, side-by-sides, trailers, compartment lighting, and more.